



## PRO-ISO-PHY-TETRA-2

### Two-TETRA-Station Combiner

- The PRO-ISO-PHY-TETRA-2 combiner provides the possibility of connecting up to two TETRA radios into one common antenna.
- The PRO-ISO-PHY-TETRA-2 models are available in the frequency range 380 - 420 MHz.

## DESCRIPTION

- ETSI compliant connection of two digital radios.
- The PRO-ISO-PHY-TETRA-2 is the successor to the PRO-MIX-PHY-TETRA-N-2RXI.
- The PRO-ISO-PHY-TETRA-2 has improved isolation between the ports - more than 60 dB - and lower insertion loss.
- The use of high-quality system components such as highly selective helical duplex filters and high-performance isolators provides high isolation and secure communication.
- The smallest and most compact design on the market.
- Suitable for both stationary and mobile use.
- Also available in tray for 19" rack mounting.
- Vibration and shock tested in accordance with EN-60068\*\*.

\*\*Tested in accordance with:

Random test: EN 60068-2-64, test specification: EN 300 019-2-5 V3.0.0.

Shock test: EN 60068-2-27, test specification: EN 300 019-2-5 V3.0.0.

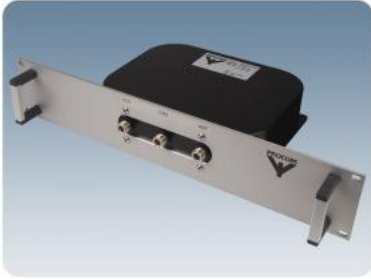
Bump test: EN 60068-2-29, test specification: EN 300 019-2-5 V3.0.0.

## ORDERING DESIGNATIONS

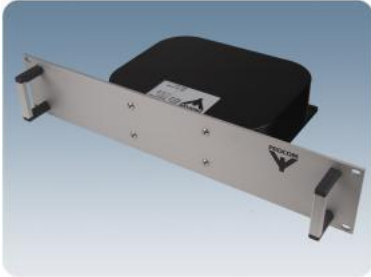
TYPE	TX MHZ	RX MHZ	PRODUCT NO.
PRO-ISO-PHY-385/390-2-N(f)	380 - 385	390 - 395	210001982
PRO-ISO-PHY-385/390-2-TR-F-N(f)	380 - 385	390 - 395	210002045
PRO-ISO-PHY-385/390-2-TR-B-N(f)	380 - 385	390 - 395	210002046
PRO-ISO-PHY-415/420-2-N(f)	410 - 415	420 - 425	210002114
PRO-ISO-PHY-415/420-2-TR-F-N(f)	410 - 415	420 - 425	210002115
PRO-ISO-PHY-415/420-2-TR-B-N(f)	410 - 415	420 - 425	210002116
ACCESSORIES			
19" Front plate with connectors in front			210002032
19" Front plate with connectors in back			210002030

### PRO-ISO-PHY-TETRA-2-TR-F-N(f)





**PRO-ISO-PHY-TETRA-2-TR-B-N(f)**



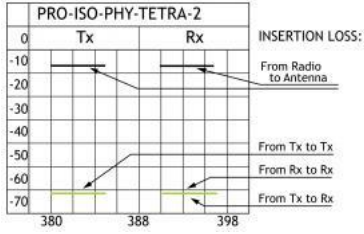
## SPECIFICATIONS

ELECTRICAL	
MODEL	PRO-ISO-PHY-TETRA-2
TYPE	TETRA combiner
TX/RX FREQUENCY	TX: 380 - 385 MHz RX: 390 - 395 MHz or TX: 410 - 415 MHz RX: 420 - 425 MHz
INSERTION LOSS TX-ANT.	< 6.2 dB (Typ. 4.8 to 6.0 dB)
INSERTION LOSS RX-ANT.	< 6.2 dB (Typ. 4.8 to 6.0 dB)
ISOLATION TRX → TRX	TX - TX: > 60 dB (380 - 385 MHz & 410 - 415 MHz) RX - RX: > 60 dB (390 - 395 MHz & 420 - 425 MHz) TX - RX / RX - TX: > 60 dB
SWR	< 1.5
MAX. POWER	25 W/station
GROUP DELAY VARIATION	TX-ANT. < 120 nsec. RX-ANT. < 150 nsec.
MECHANICAL	
CONNECTOR TYPE	N-female
COLOUR	Black
DIMENSIONS (L x W x H)	190 (excl. conn.) x 240 x 65 mm / 7.48 (excl. conn.) x 9.45 x 2.56 in.
WEIGHT	Approx. 3500 g / 7.72 lb.

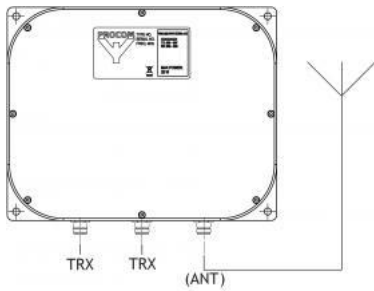


ENVIRONMENTAL	
IP-GRADE	IP-62

## TYPICAL ATTENUATION VALUES



## CONNECTION DIAGRAM



## MOUNTING DETAILS

